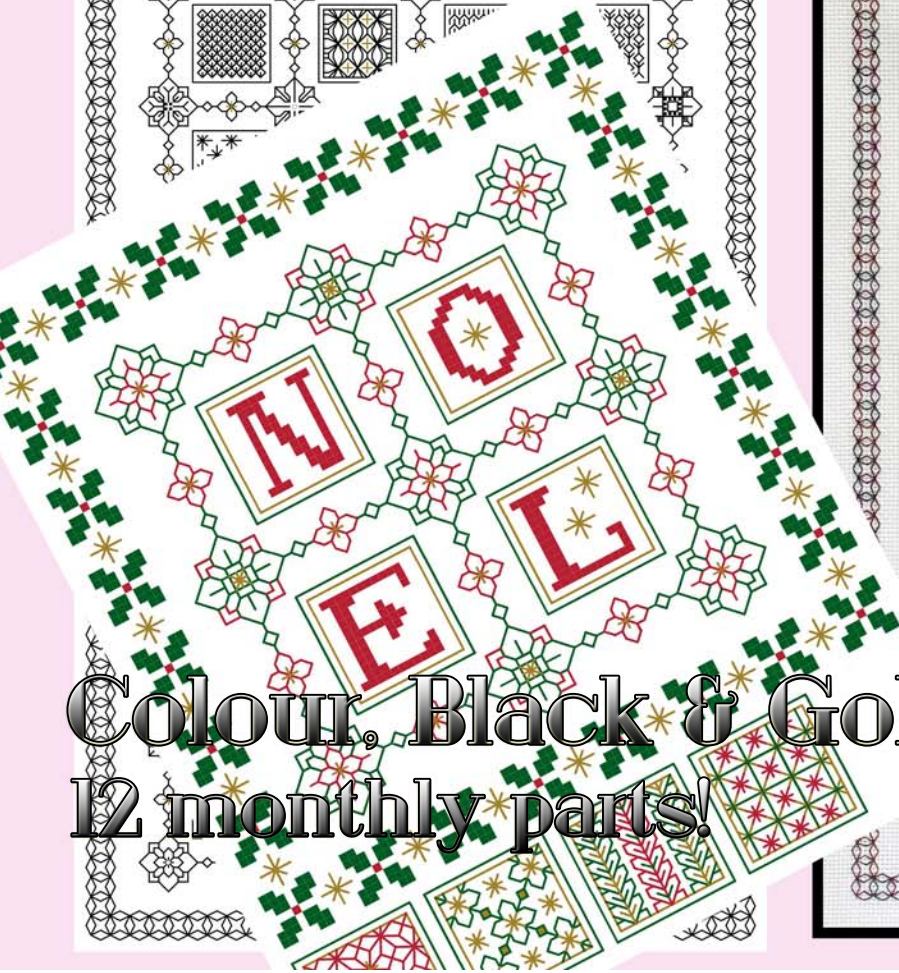
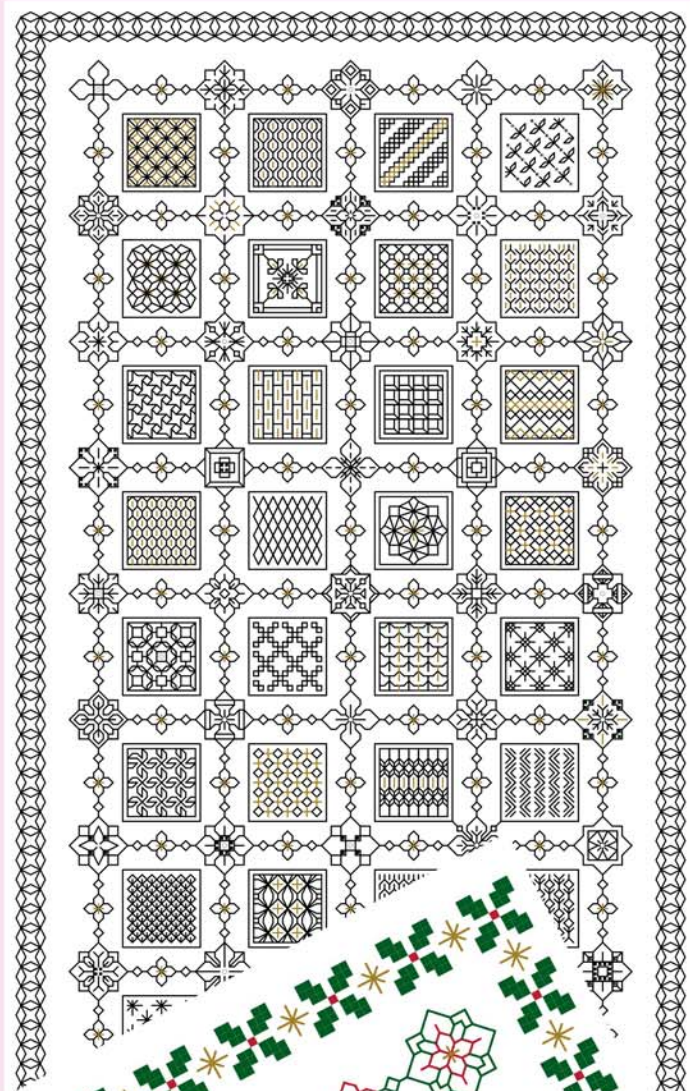


'TINY TREASURES'

Rectangle - Part 2



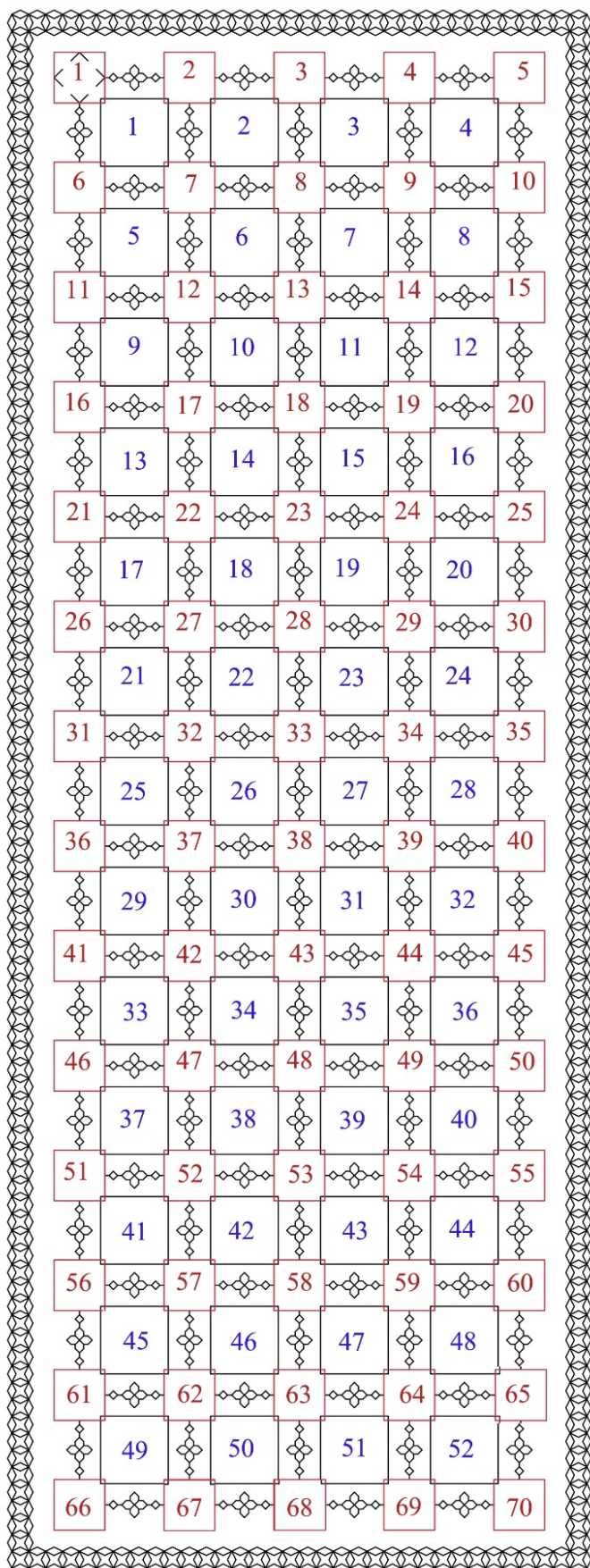
Colour, Black & Gold
12 monthly parts!

Tiny Treasures Rectangle Design Part 2 – Colour and Black and Gold

Rectangular design suitable for framing or a runner. This design is less complicated than the square design.

Design area: 9.86 x 26.43 inches

Stitches: 138 x 370



Material:

Zweigart 28 count evenweave or 14 count Aida,
15 x 33 inches

25 count Lugana Material size: 17 x 35 inches

70 Flower motifs

52 Pattern blocks

1 border and 120 mini links

Total: 243 Tiny Treasures

Join Page 1 to Page 2.

Threads: Information about the threads required in
on the Keys attached to the back of Part 1 and also
in

FR0159 Introduction.

Stitches used:

Back stitch, one strand of floss

Cross stitch two strands of floss

Evenweave: stitches are worked over 2 threads
unless the pattern indicates otherwise.

Cross stitch: stitches are worked over one block
unless the pattern indicates otherwise.

Work Rectangular Design as follows:

Work flower motifs 3, 4, 5, 8, 9, 10, 12,

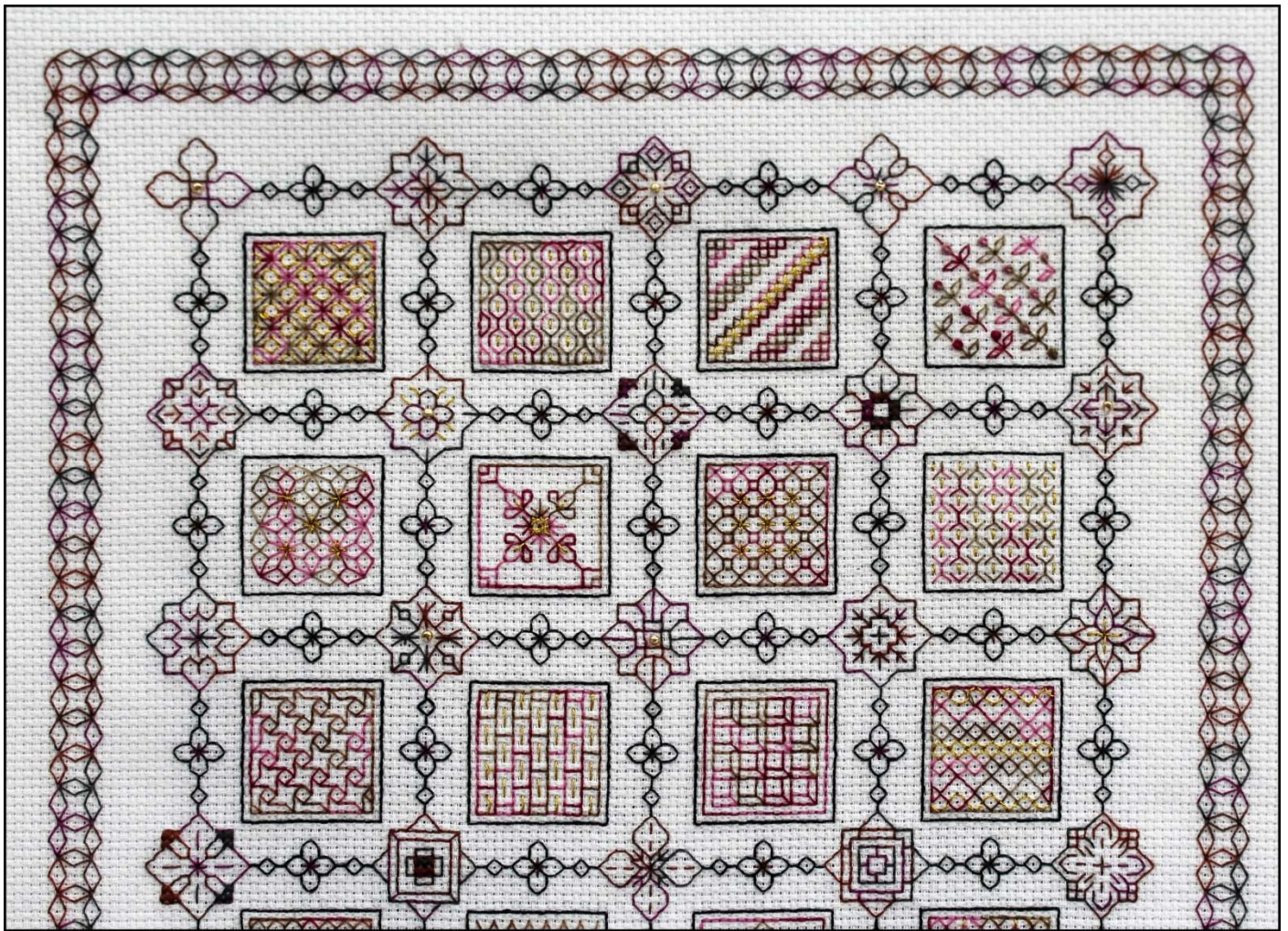
Pattern blocks 3, 4, 7, 8, 11,12

Continue the border using one strand of floss.

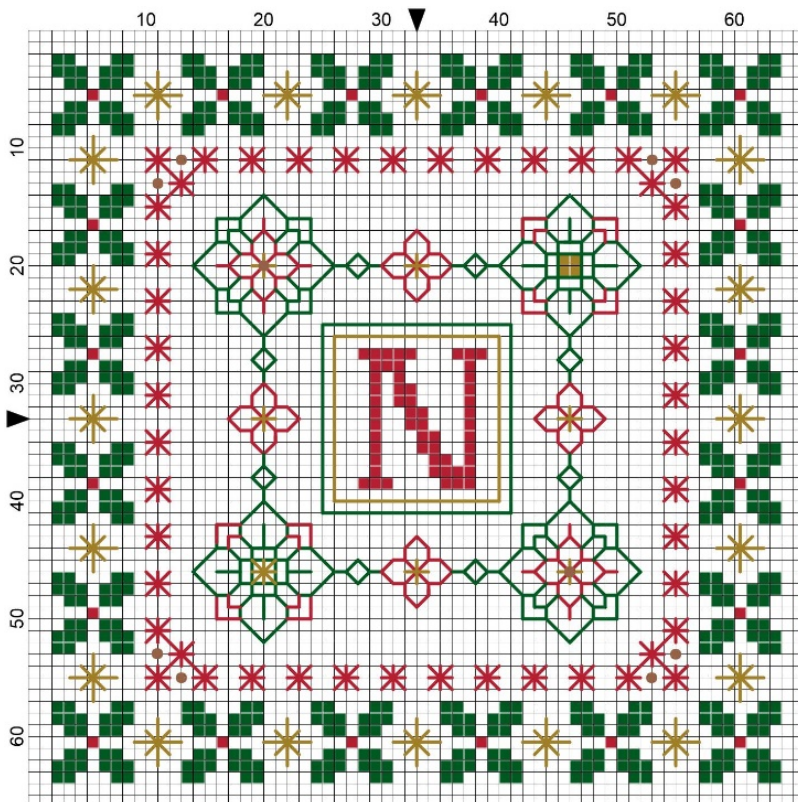
Add beads after the whole embroidery has been
completed.

This completes the full width of the chart.

Numbered rectangular layout



Parts 1 and 2 Aida embroidery worked in DMC Coloris

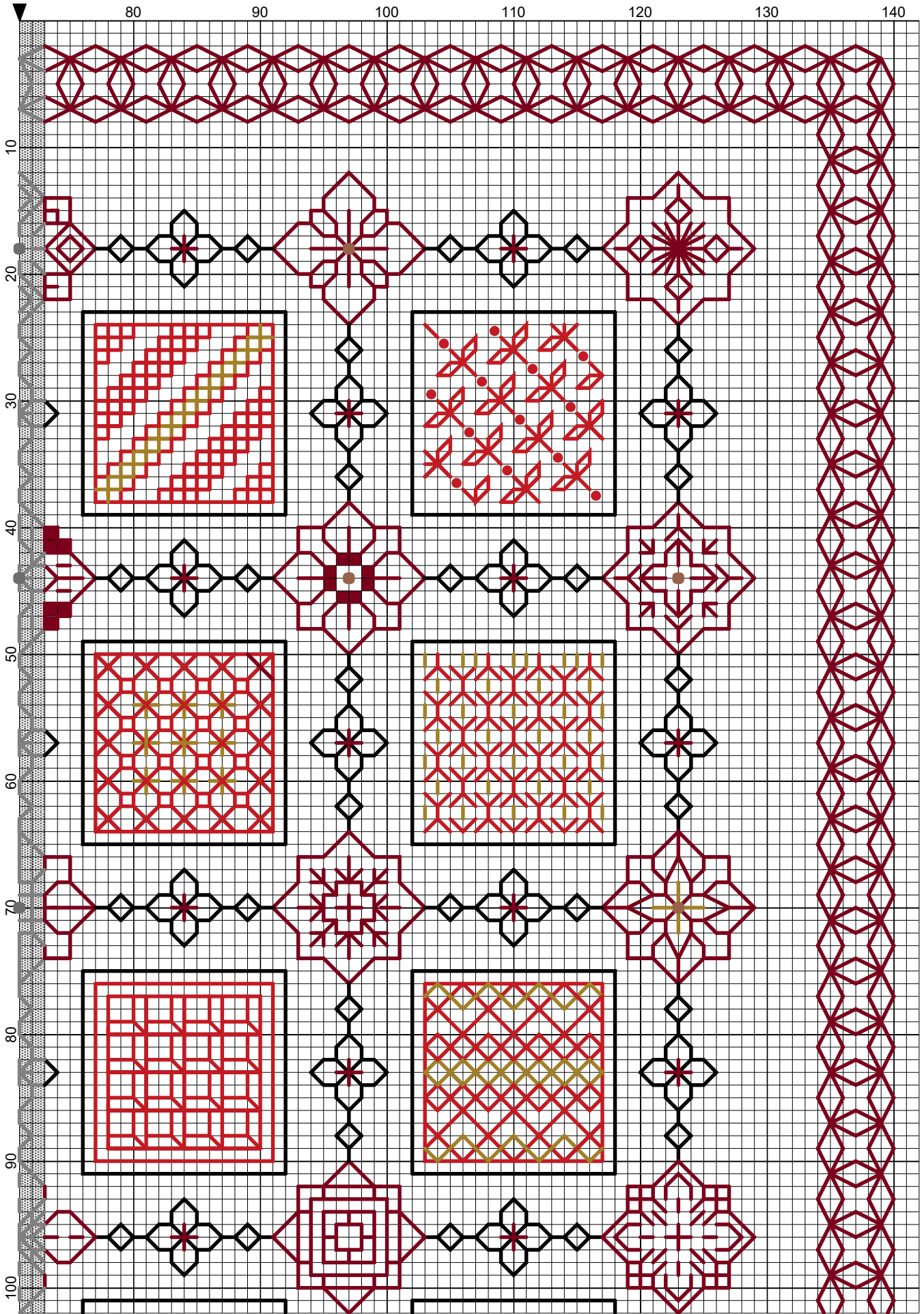


Use the ideas from Parts 1 and 2 to create a sampler for the festive season. Use one block or four, the choice is yours!

(Chart is included in Part 2)

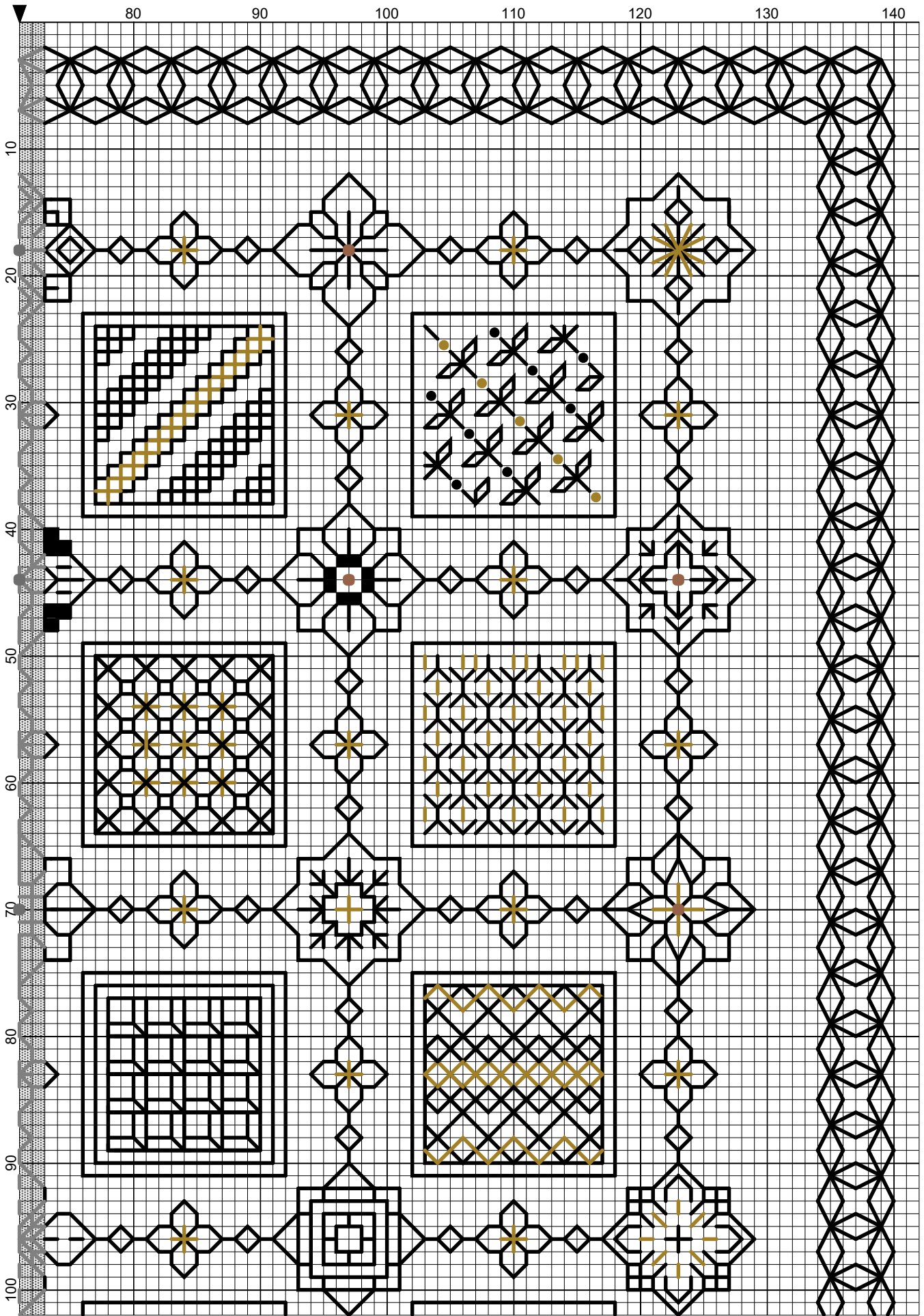
If you have any queries please contact:
lizalmond@blackworkjourney.co.uk

Tiny Treasures Rectangular Colour Panel



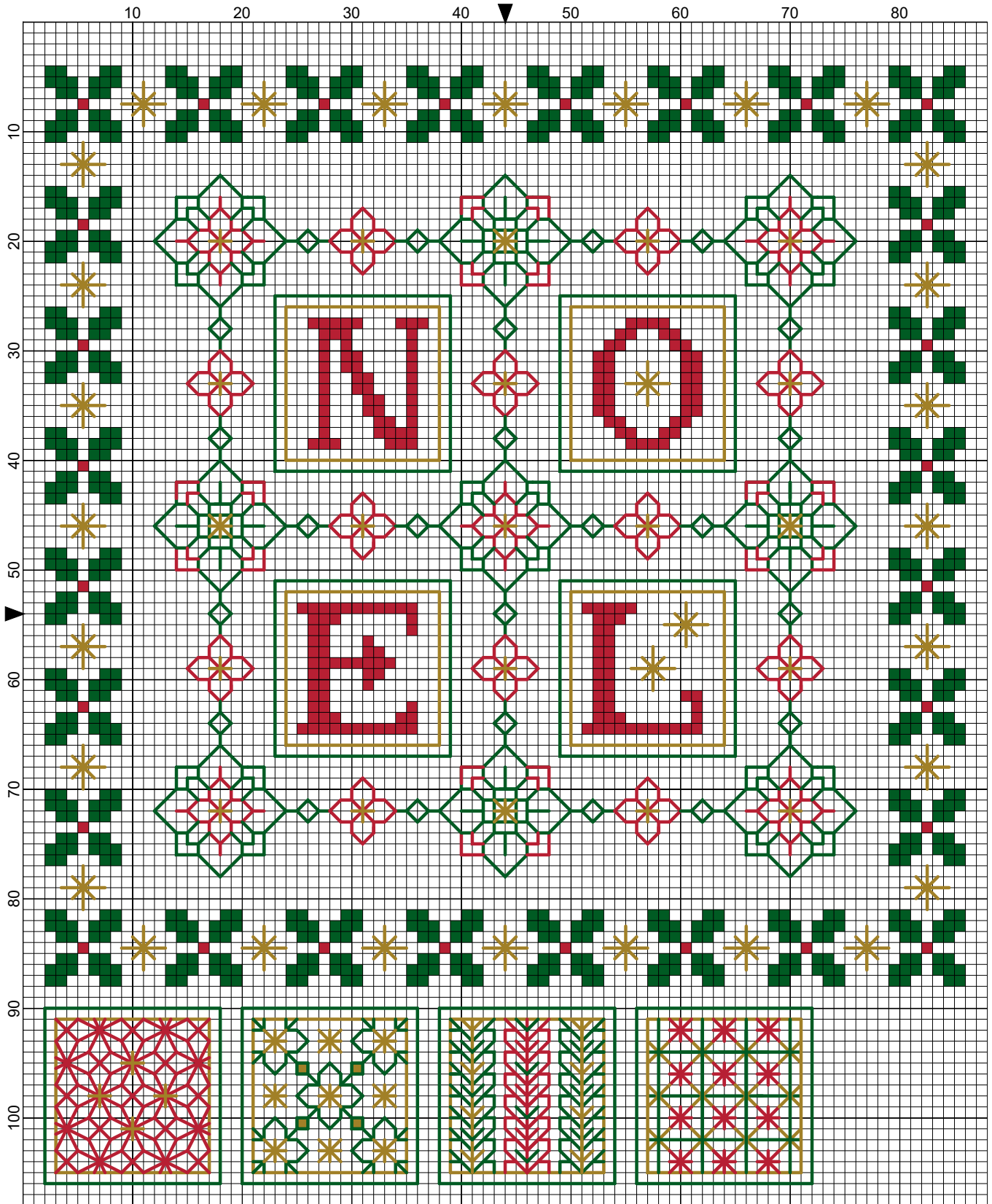
Elizabeth Almond

Tiny Treasures Rectangular Black Panel



Elizabeth Almond

Christmas Sampler



Elizabeth Almond

Christmas Sampler

Author: Elizabeth Almond
Copyright: Elizabeth Almond
Grid Size: 88W x 108H
Design Area: 6.00" x 7.29" (84 x 102 stitches)

Legend:

■ [2] DMC-699 ANC-923 DLE- christmas green ■ [2] DMC-304 ANC-19 DLE- christmas red - md

Call Outs:

■ [2] DLE-E3852 Dark Gold DMC Light Effects

Backstitch Lines:

— DMC-699 christmas green — DLE-E3852 Dark Gold — DMC-304 christmas red - md

Stitch this mini Christmas Sampler on 28 count evenweave or 14 count Aida as a gift for someone special. As an alternative work four blackwork filler patterns in place of the letters.

Material:

Zweigart 28 count evenweave or 14 count Aida 8 x 8 inches
To make a mini cushion cut two pieces of material 10 x 10 inches

Threads:

DMC stranded floss:
DMC 669 Christmas green, one skein
DMC 304 Christmas red, one skein
DMC Light Effects E3852 Dark gold, one skein
Tapestry needle No 24
Small embroidery ring

Stitches used:

Back stitch, one strand
Cross stitch, two strands
Eyelet stitch, one strand

Method:

Edge the fabric to prevent fraying. Fold the fabric into four quarters to find the centre point. Mount the embroidery in the ring so that the fabric is 'drum' tight.

1. Work the central motif first.
2. Work the letters or fillers in turn using the colours selected. Work the holly border in two strands of floss.
3. Place the finished embroidery face down on a soft towel and press lightly.

Small cushion - work the two pieces. Place the two pieces back to back with the embroidery inside. Machine stitch around the edge leaving a small opening to insert small cushion pad. Slip stitch closed. Add cord edging (optional)

I hope you enjoy working this design as much as I have enjoyed creating it.

If you have any queries please contact:

lizalmond@blackworkjourney.co.uk